

Informationstag: Dynamische Kunststoffcharakterisierung

Dr. André Haufe
DYNAmore GmbH



DYNAmore GmbH

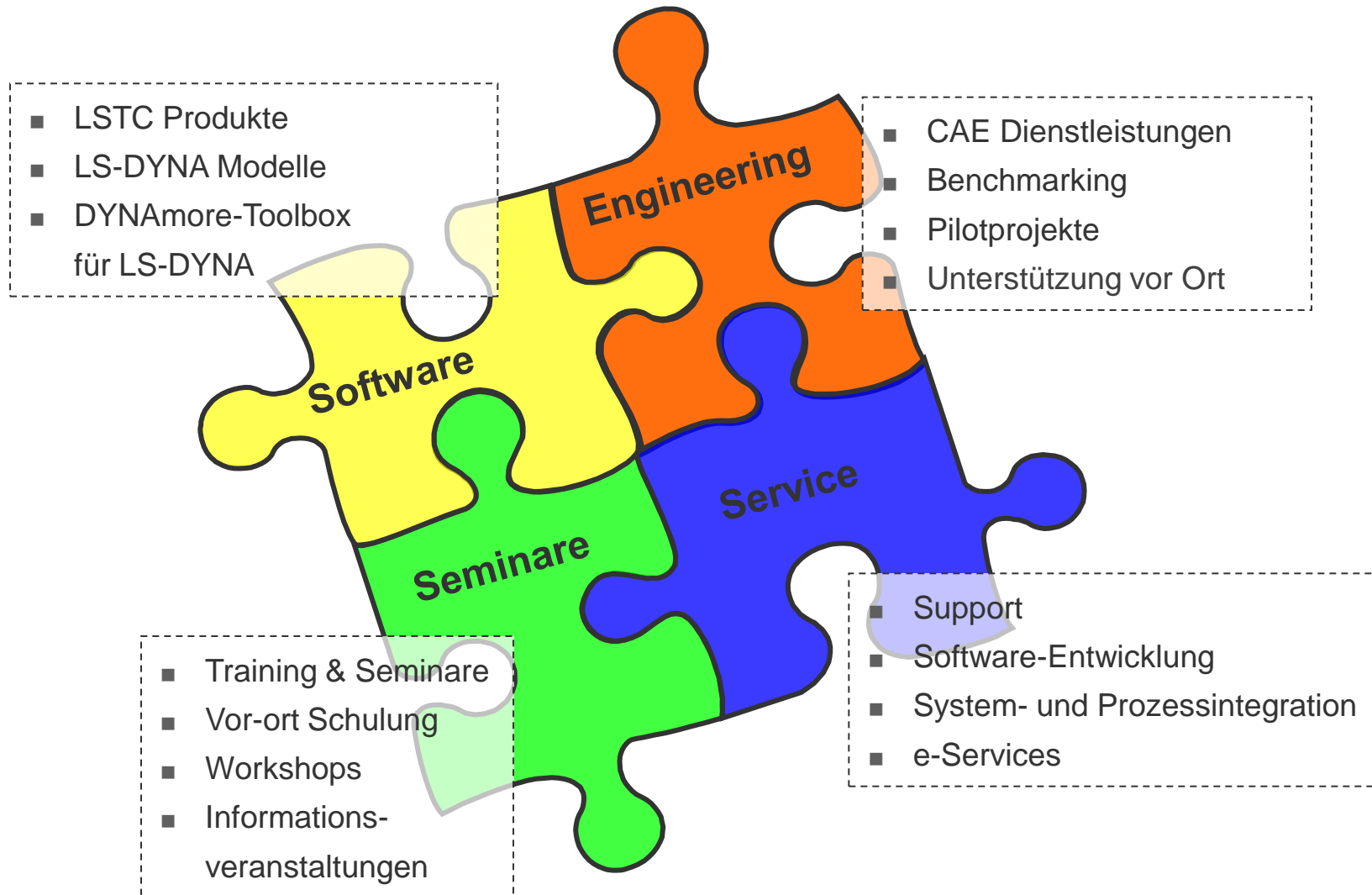
Gesellschaft für
FEM-Ingenieurdienstleistungen

**Stuttgart - Karlsruhe - Ingolstadt - Langlingen - Berlin
Dresden - Linköping - Götheburg - Zürich**

Industriestraße 2
D-70565 Stuttgart

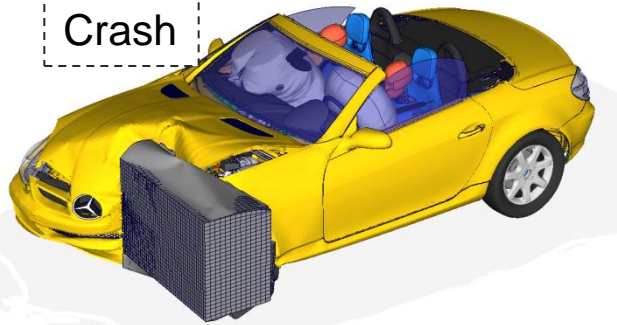
Tel. 07 11 - 45 96 00 - 0
Fax 07 11 - 45 96 00 - 29
e-mail: info@dynamore.de
Internet: www.dynamore.de

Portfolio

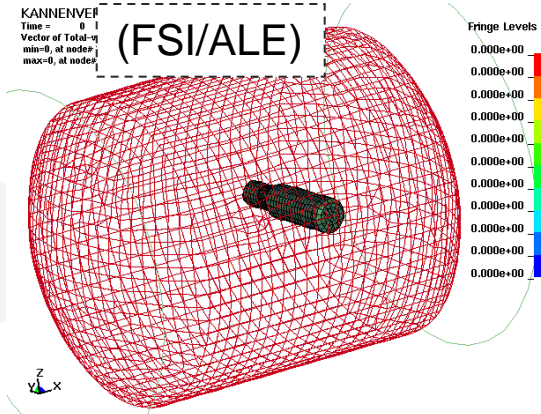


Anwendungen

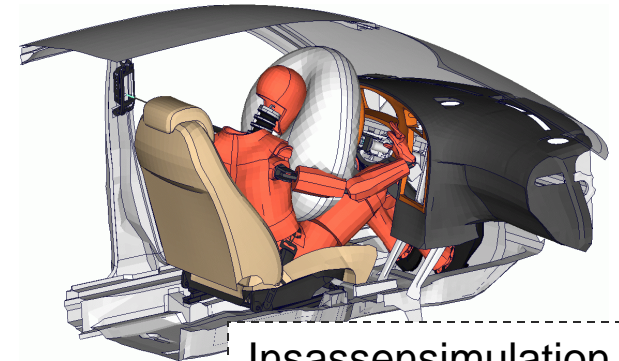
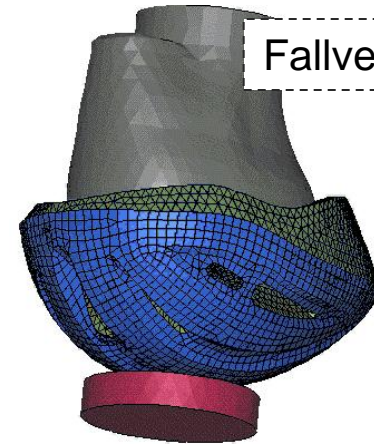
Crash



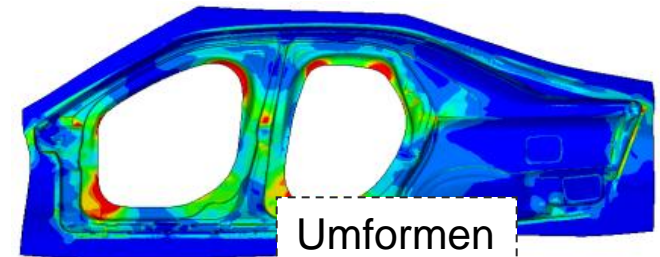
(FSI/ALE)



Fallversuche



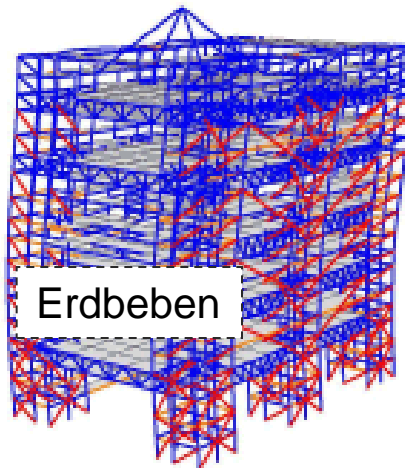
Insassensimulation



Umformen

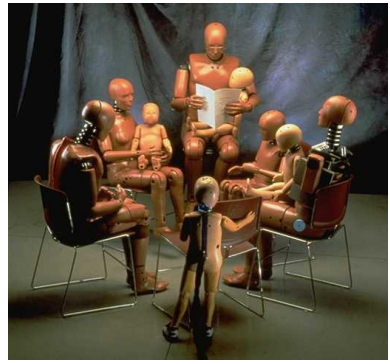


Verteidigung

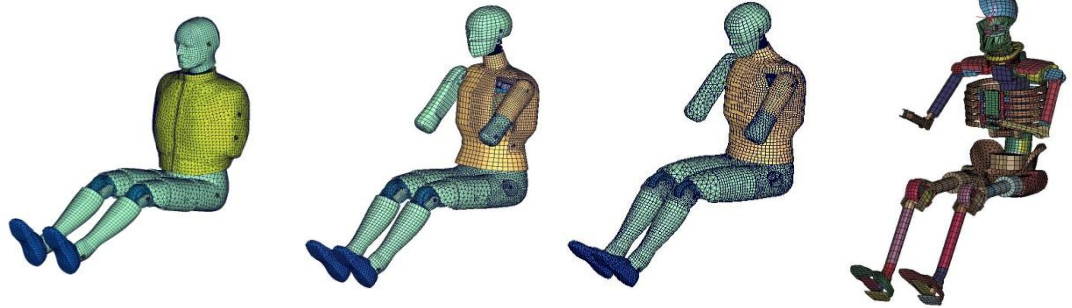


Erdbeben

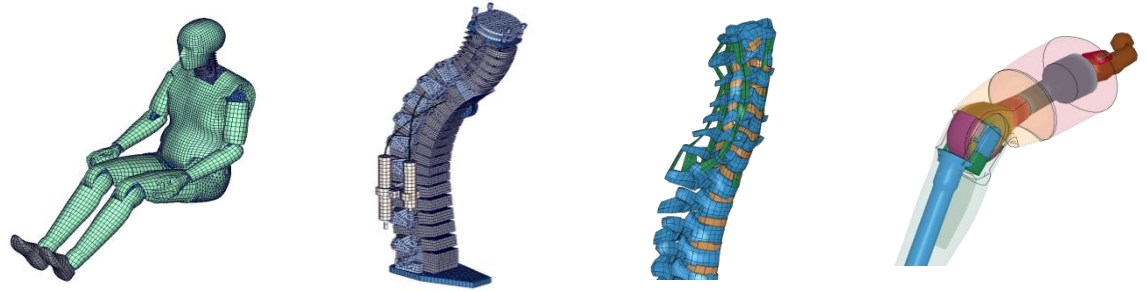
Modellentwicklung



SID-Modelle



BioRID-Modell



Mensch-Modelle



Unternehmen

People behind:

- management: Dipl.-Math. U. Franz (Managing Director)
Prof. Karl Schweizerhof (Technical Director)
- manager headquarters in Stuttgart: Dr. T. Münz
- support: Dr. K. Weimar, Kurt Schweizerhof, Oliver Graf, ...
- sales: Prof. U. Göhner, K. Ryssel
- optimization: Dr. H. Müllerschön, Dr. Liebscher
- dummy models: S. Stahlschmidt, A. Gromer
- metal forming: P. Vogel, Dr. A. Haufe
- process modeling: Dr. A. Haufe
- LS-DYNA coding: Dr. T. Erhart, ...
- LS-OPT coding: K. Witowski
- consulting: Dr. T. Münz
- administration: C. Ernigkeit, U. Kraus



DYNAmore Kunden

Industrie: Airbus, Atair, Alcan, AMG, Autoliv, Audi, Arvin Meritor, Behr, Benteler, Bertrand, BMW, Brose, CADFORM, CDH, Cidaut, Concept, Daimler, Decoma, Delphi, Dräxlmaier, EADS, Fiat, Airbus, EDAG, Faurecia, FEMcon, Fraunhofer Institute, Ford, HDW, Hilti, Idiada, Imperia, Inst f. Kurzzeitdynamik, IRB, ISE Innomotive, Johnson Controls, IVM, KOLT, KWM, Lear, LASSO, Leon, MATFEM, MTU, Nordseewerke, OK Engineering, Opel/EDS, P+Z, PART, Porsche, Prototechnik, Rheinmetall, Rücker, Siemens, Takata/Petri, Tecosim, ThyssenKrupp Stahl, TI Automotive, Tofas, Tractebel, TRW, Voest Alpin, Volkswagen, Yazaki,...



e-Services

■ www.dynamore.de

- All software products
- Actual release notes
- Download area for software & documentation
- FEM models
- Training schedule

■ www.dynalook.com

- Database for published papers on LS-DYNA
- Collection of simple examples
- Problem & solution collection build by LS-DYNA users

■ www.dynaexamples.com

- Seminar notes
- More than 120 examples presented
- Download area

■ www.dynasupport.com

- any support information regarding LS-DYNA
- FAQ

The screenshot displays the DYNAMORE website interface. At the top, there is a search bar and navigation links. The main content area is divided into several sections:

- Finite Element Solutions:** A welcome message and a section for the LS-DYNA Forum (12.-13. Oktober in Bamberg). It lists speakers and topics, including a keynote by Prof. M. Käliske and a simulation of a car crash.
- LS-DYNA Examples:** A section titled "Welcome to LS-DYNA Examples" that provides a search function and lists various example categories like "Metal forming" and "ALE".
- DYNAllook:** A section for searching through a database of papers from LS-DYNA conferences, with a search bar and a list of conference results.
- Navigation and Valuable Sites:** A sidebar with links to "Navigation" (Intro by K. Weismar, etc.), "Valuable Sites" (LSTC, LS-DYNA Support Site), and "DYNAllook".
- Seminars and Infotage:** A sidebar listing upcoming seminars and information days, such as "Infotage (kostenfrei)" and "Seminare".

Agenda



08:45 Uhr Begrüßung

A. Haufe (DYNAmore)



09:00 Uhr Einführung in die Charakterisierung und Modellierung von Kunststoffen

A. Haufe (DYNAmore)



09:30 Uhr Kurzvorstellung der Messmöglichkeiten mit 4a impetus

P. Reithofer (4a engineering)



09:45 Uhr Materialkartengenerierung mit 4a impetus mittels Neuronaler Netze

M. Rollant (4a engineering)



10:15 Uhr Pause



10:45 Uhr Anpassung von Werkstoffmodellen für Polymere mittels dynamischer Pendelversuche

A. Förderer (DYNAmore)



11:15 Uhr Anpassung komplexer Fließflächen und Möglichkeiten der Versagensabbildung mit 4a impetus

P. Reithofer (4a engineering)



11:45 Uhr Dynamische Materialcharakterisierungen von Composites mit 4a impetus

P. Reithofer (4a engineering)



12:15 Uhr Ende



FIN