

# DYNAmore GmbH LS-DYNA

Informationstag über Menschmodelle –  
Überblick und Erweiterungsmöglichkeiten

2 Juni 2016

# DYNAmore – The Company

## ■ Countries and their Headquarters

- Headquarters in Stuttgart
- Nordic – Linköping
- Swiss – Zurich
- Italia – Torino
- France – Versailles



## ■ Further Offices

- Ingolstadt
- Dresden
- Langlingen (Wolfsburg)
- Berlin

## ■ Customer-dedicated (“nearfield”) Offices

- Sindelfingen (Daimler AG)
- Weissach (Porsche)
- Ingolstadt (Audi)
- Gothenburg (Volvo)



Stuttgart [Headquarters]

# DYNAmore – The People

## ■ Who we are

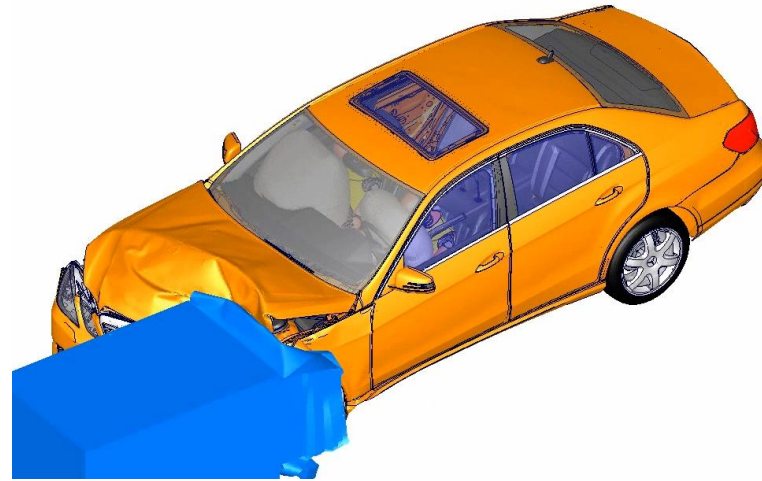
- In total close to 100 people
- Civil and mechanical engineers, mathematicians, computer scientists,...
- The employees are from 13 different countries



# DYNAmore – The Products

## ■ Software

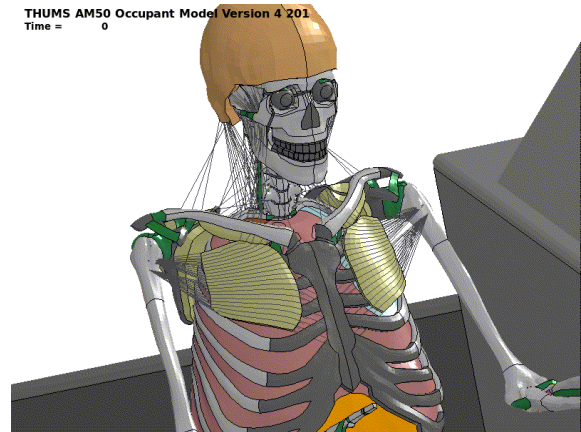
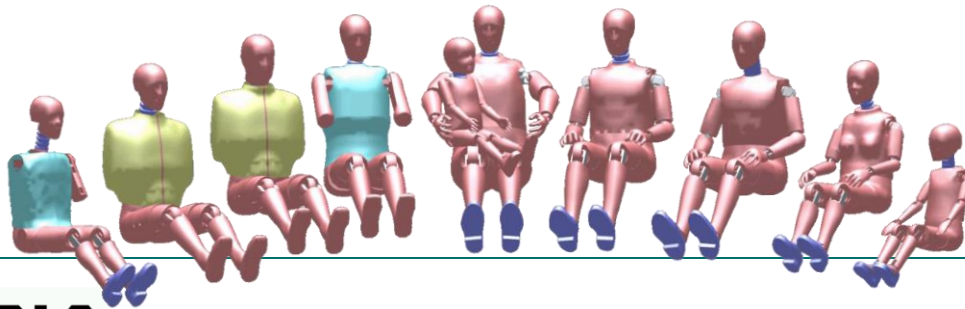
- LS-DYNA
- LS-OPT und LS-TASC
- LS-PrePost
- eta/DYNAFORM
- OmniCAD
- FEMZIP
- Digimat



Courtesy of Daimler

## ■ Models

- Barrier and impactor models (Arup/Daimler/Porsche)
- Dummy models (FAT/PDB/Humanetics/LSTC)
- Human model (THUMS)



# DYNAmore – The Services

## ■ Software

- European master distributor for LS-DYNA (w/o UK), plus Turkey and Brazil
- Support and sales LS-DYNA

## ■ Engineering

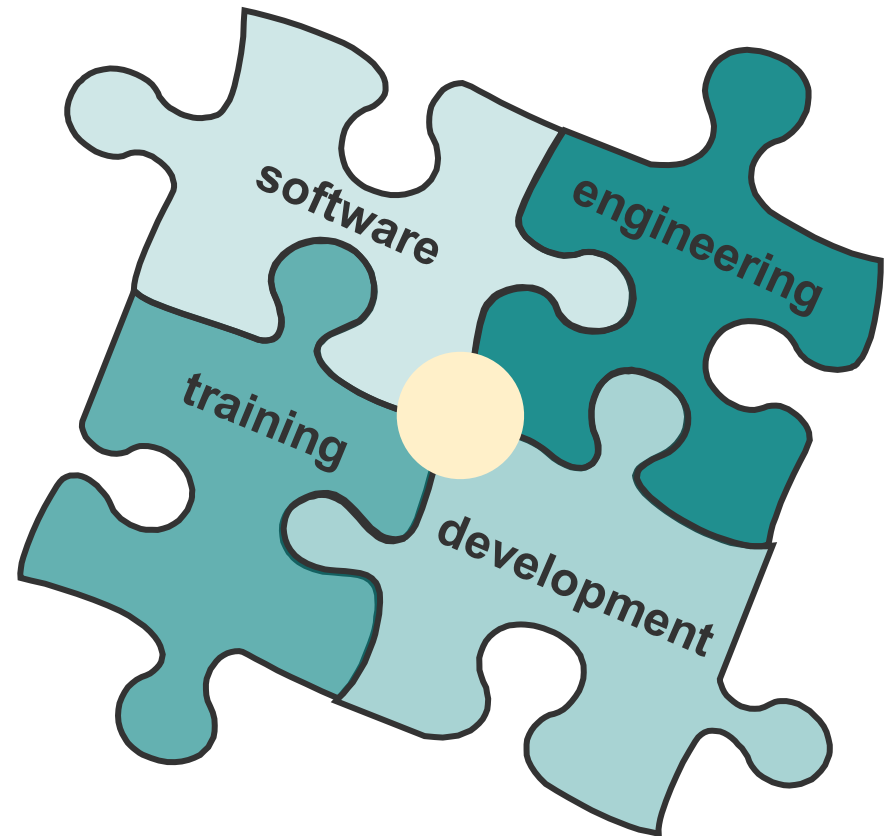
- Benchmarking
- Pilot projects

## ■ Development

- Software development
- Material & dummy models
- System & process integration
- Method development

## ■ Training

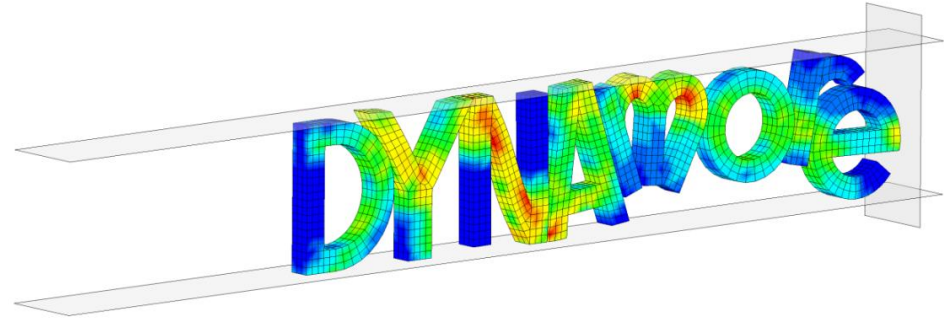
- Seminars & on-site coaching
- Conferences
- Support



# DYNAmore – Further Activities

## ■ Software development for:

- 6 developers for LS-DYNA
- 2 developers for LS-OPT
- 1 developers for LS-PrePost



## ■ IT Services

- Process integration of LS-DYNA
- CAx Data Management
  - Simulation Data Management (SDM)
  - Load case Composer (LoCo)
- Process monitoring (Status.E)
- Report generation (CAViT)

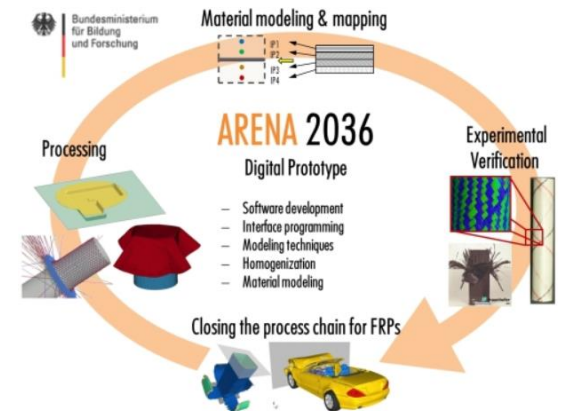
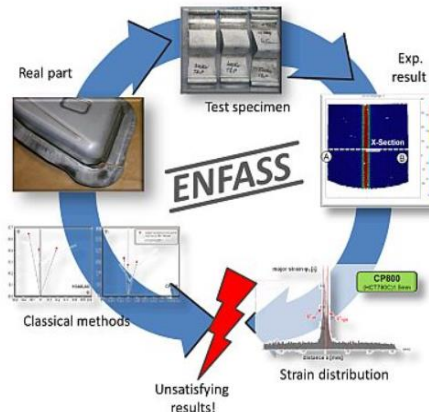
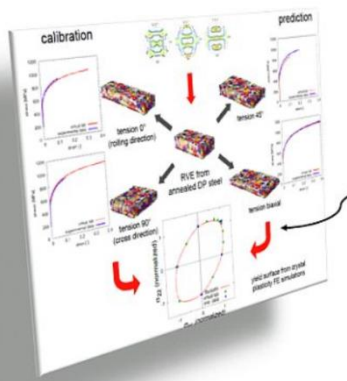
Since 01.09.2014: SCALE GmbH

**SCALE**  
IT-Solutions for CAE



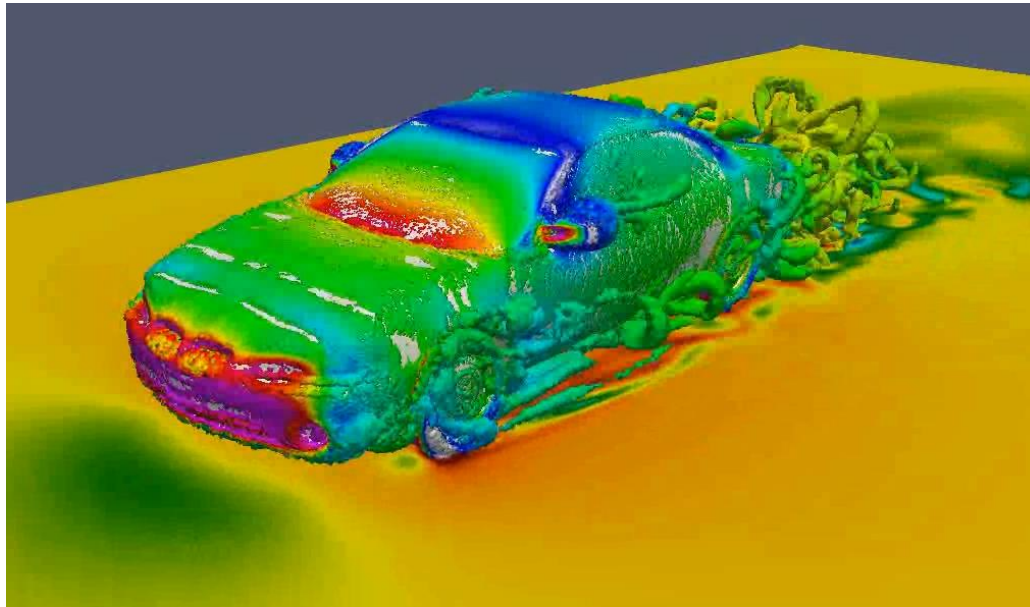
# DYNAmore – Examples for Advanced Customer Support

- Customer specific revisions of LS-DYNA
- Material development (SAMP, GISSMO, etc.)
- Mapping of simulation data (forming, composites, etc.)
- Material parameter determination
- Connection modeling, ...
- Partner in many research projects (national/ international)
  - Composites: Swim-RTM, T-Pult, ARENA 2036, 3dProCar
  - Forming: ENFASS, TWIP4EU
  - Many more



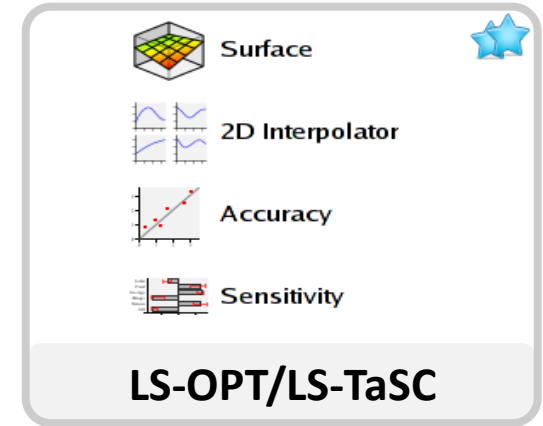
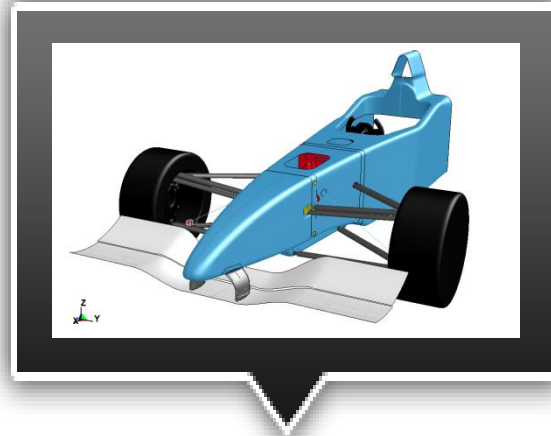
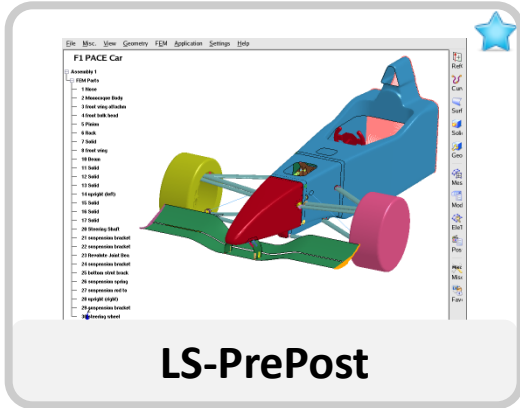
# DYNAmore – The Customers

- Support is given to
  - All automotive OEMs in Europe (except UK), that use LS-DYNA
  - As a consequence, automotive suppliers and engineering consulting companies
  - Over 150 Universities and Research Organizations
  - Well over 100.000 cores running with LS-DYNA

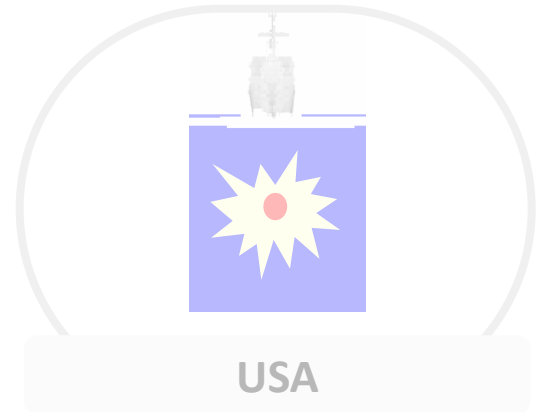




# LSTC Product Suite



**LS-DYNA**  
One License – all features



★ FREE OF CHARGE!

# More Information on LSTC Product Suite

- Livermore Software Technology Corp. (LSTC)  
[www.lstc.com](http://www.lstc.com)

## ■ LS-DYNA

- Support / Tutorials / Examples / FAQ  
[www.dynasupport.com](http://www.dynasupport.com)
- More Examples  
[www.dynaexamples.com](http://www.dynaexamples.com)
- Conference Papers  
[www.dynalook.com](http://www.dynalook.com)
- YouTube Channel  
[www.youtube.com/LSTCandDYNAmore](http://www.youtube.com/LSTCandDYNAmore)
- European Master Distributor  
[www.dynamore.de](http://www.dynamore.de)

## ■ LS-PrePost

- Support / Tutorials / Download  
[www.lstc.com/lsp](http://www.lstc.com/lsp)

## ■ LS-OPT / LS-TaSC

- Support / Tutorials / Examples  
[www.lsoptsupport.com](http://www.lsoptsupport.com)

# LS-DYNA – Conferences

## ■ 14. German LS-DYNA Forum

- 10-12 October 2016 in Bamberg
- ~80 user presentations (Daimler, Opel, Porsche, etc.)
- Workshops on specific topics
- ~320 attendees



Courtesy of Prof. Dr. Ing. h.c. F. Porsche AG

## ■ 11. European LS-DYNA Conference

- 9-11 May, 2017 in Salzburg, Austria
- ~550 attendees expected



Welcome Kongresshotel Bamberg



Plenary room



# Outline of the Information Day

AGENDA, 2. JUNI	
13:30	<b>Begrüßung und Einführung</b> N. Karajan (DYNAmore)
13:40	<b>Aktuelle Anwendungen und Entwicklungen des THUMS-D – Status der Implementierung und Validierung aktiver Muskeln</b> C. Mayer, A. Oeztuerk (Daimler AG); J. Blaschke (Universität Stuttgart, INSPO)
14:10	<b>Die Vision des „Overall Human Modell“ im Exzellenzcluster SimTech an der Universität Stuttgart</b> Prof. J. Fehr, Prof. O. Röhrle, Prof. S. Schmitt (Universität Stuttgart)
14:30	<b>Dreidimensionale, kontinuumsmechanische Modellierung des muskuloskeletalen Apparates</b> Prof. O. Röhrle (Universität Stuttgart CBM, Fraunhofer IPA)
14:45	<b>Das menschliche Verhalten bei seitlichen Fahrzeugmanövern – „Far-Side“ Crash, Spurwechsel und Seitenkollision</b> Prof. J. Fehr (Universität Stuttgart ITM)
15:00	<b>Computersimulation mit einem digitalen Menschmodell zur Prognose von Produkt- und Produktionsergonomie</b> Prof. S. Schmitt (Universität Stuttgart INSPO)
15:15	Kaffeepause
15:45	<b>From Head-neck Biomechanics to Advanced Injury Prediction Tools</b> Prof. R. Willinger, C. Deck, N. Bourdet, F. Meyer (University Strasbourg, CNRS Strasbourg)
16:15	<b>Aktuelles von den THUMS Menschmodellen</b> D. Fressmann (DYNAmore)
16:45	<b>Das CASIMIR-Modell für die Simulation von Sitzkomfortanwendungen – Status für LS-DYNA</b> N. Lazarov, D. Fressmann (DYNAmore); A. Siefert (Wölfel Beratende Ingenieure)
17:15	Ende